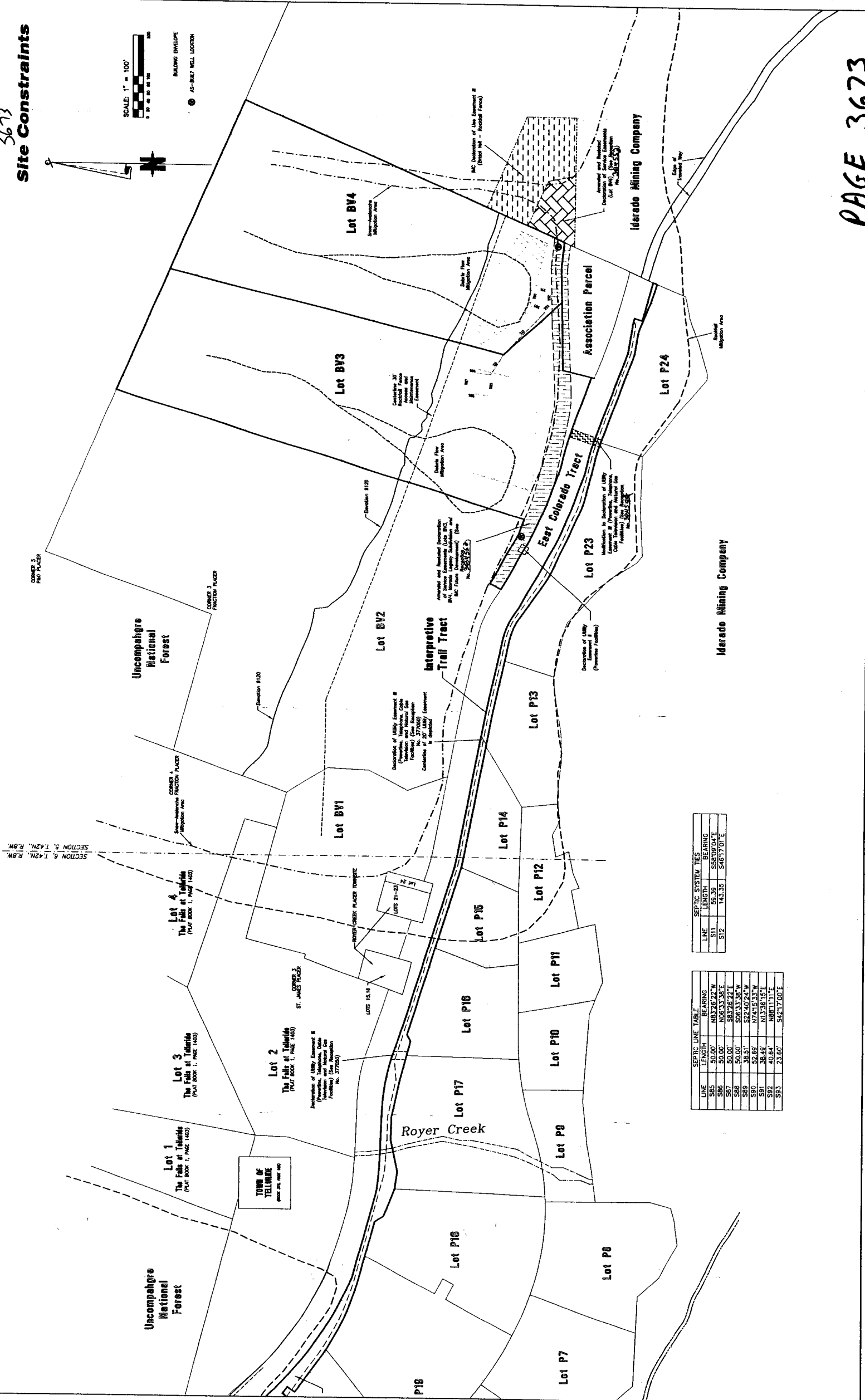
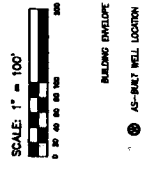


3673

Site Constraints



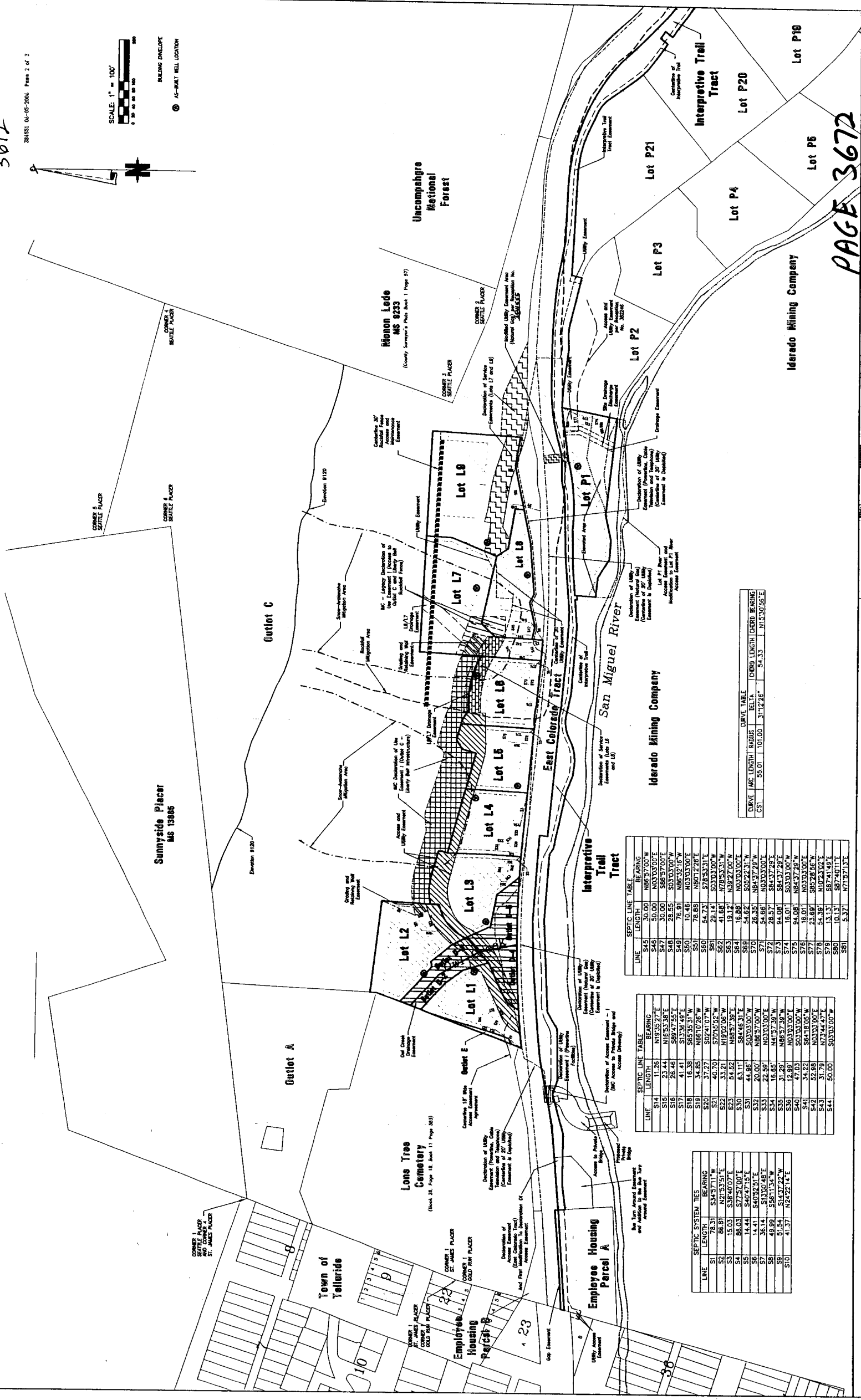
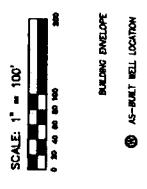
SEPTIC SYSTEM TIES

LINE	LENGTH	BEARING
S11	55.39	S84°09'04"E
S12	143.35	S46°57'01"E

SEPTIC LINE TABLE

LINE	LENGTH	BEARING
S45	50.00'	N83°26'22"W
S46	50.00'	N06°33'38"E
S47	50.00'	S83°26'22"E
S48	50.00'	S08°33'38"W
S49	38.51'	S22°40'24"W
S50	52.89'	N74°15'33"W
S51	38.48'	N33°56'15"E
S52	40.64'	N88°11'11"E
S53	23.60'	S42°17'00"E

3672



SEPTIC LINE TABLE

LINE	LENGTH	BEARING
S14	11.26	N19°55'27"E
S15	23.44	N18°53'38"E
S16	28.46	S89°47'35"E
S17	14.38	S73°38'49"E
S18	14.38	N66°32'18"W
S19	34.85	N66°10'38"W
S20	37.27	S02°41'07"W
S21	40.70	S70°45'52"W
S22	33.21	N19°02'06"W
S23	54.62	N68°27'39"E
S24	63.11	S84°46'31"E
S25	44.96	S03°03'00"E
S26	14.41	S40°47'15"E
S27	35.14	S13°00'45"E
S28	49.99	S58°11'54"W
S29	51.54	S14°37'22"W
S30	37.95	N73°44'47"E
S31	50.00	S03°03'00"W

SEPTIC LINE TABLE

LINE	LENGTH	BEARING
S48	50.00	N03°03'00"E
S49	36.00	S85°37'00"E
S50	28.55	S03°03'00"W
S51	76.91	N66°32'18"W
S52	10.46	N03°03'00"E
S53	76.86	N60°12'28"E
S54	54.73	S78°53'31"E
S55	28.14	S03°03'00"W
S56	41.68	N78°53'31"W
S57	19.12	N39°27'00"W
S58	16.88	N03°03'00"E
S59	54.62	S05°22'31"W
S60	26.35	N81°37'29"W
S61	54.66	N03°03'00"E
S62	28.57	S84°37'28"E
S63	16.01	S03°03'00"W
S64	16.01	N84°37'28"E
S65	16.01	N84°37'28"E
S66	23.68	S85°28'45"W
S67	54.38	N02°33'02"E
S68	13.13	S87°41'48"E
S69	10.13	S87°40'11"E
S70	5.37	N71°57'13"E

SEPTIC SYSTEM TIES

LINE	LENGTH	BEARING
S1	78.31	S44°57'11"W
S2	86.81	N21°53'51"E
S3	15.03	S38°40'07"E
S4	86.03	S72°57'00"E
S5	14.41	S40°47'15"E
S6	35.14	S13°00'45"E
S7	49.99	S58°11'54"W
S8	51.54	S14°37'22"W
S9	37.95	N73°44'47"E
S10	41.37	N28°22'14"E

DRIVE TABLE

LINE	ARC LENGTH	RADIUS	CHORD BEARING	CHORD LENGTH	CHORD BEARING
CS1	55.01	101.00	311°22'28"	54.35	N15°30'58"E

PAGE 3672

